

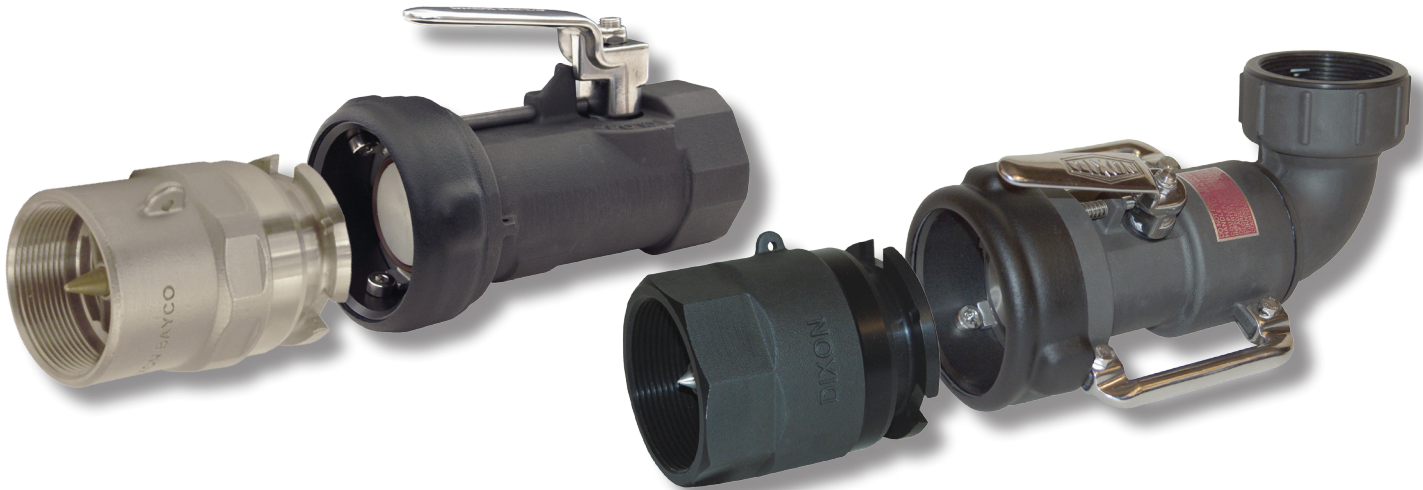


The Right Connection®

Dixon Bayco Bayonet Style Dry Disconnects

Designed to ensure a spill-free connection

Female NPT Adapters and Couplers



Application:

Ideally suited for the spill-free transfer of petroleum products such as fuel oil, lube oil blending and tank truck delivery and the spill-free fueling of heavy equipment, trucks, buses and locomotives.

Features:

- Valve handle interlocked to coupling mechanism
- Leakage on disconnect < 1.0CC
- Maximum pressure rating 85 PSI at 70°F
- Coupling rotation at 20°
- Swivels: straight or 90°
- Outlet threads: 2" or 3" NPTF
- Smooth coupling action and swivel rotation
- Tested under pressure ensuring proper operation and a leak-tight performance
- Stocked in 12 locations across the country

Materials:

- Body: aluminium black anodize hard coat finish
- Seals: Viton® or Buna
- Internals: stainless steel internals

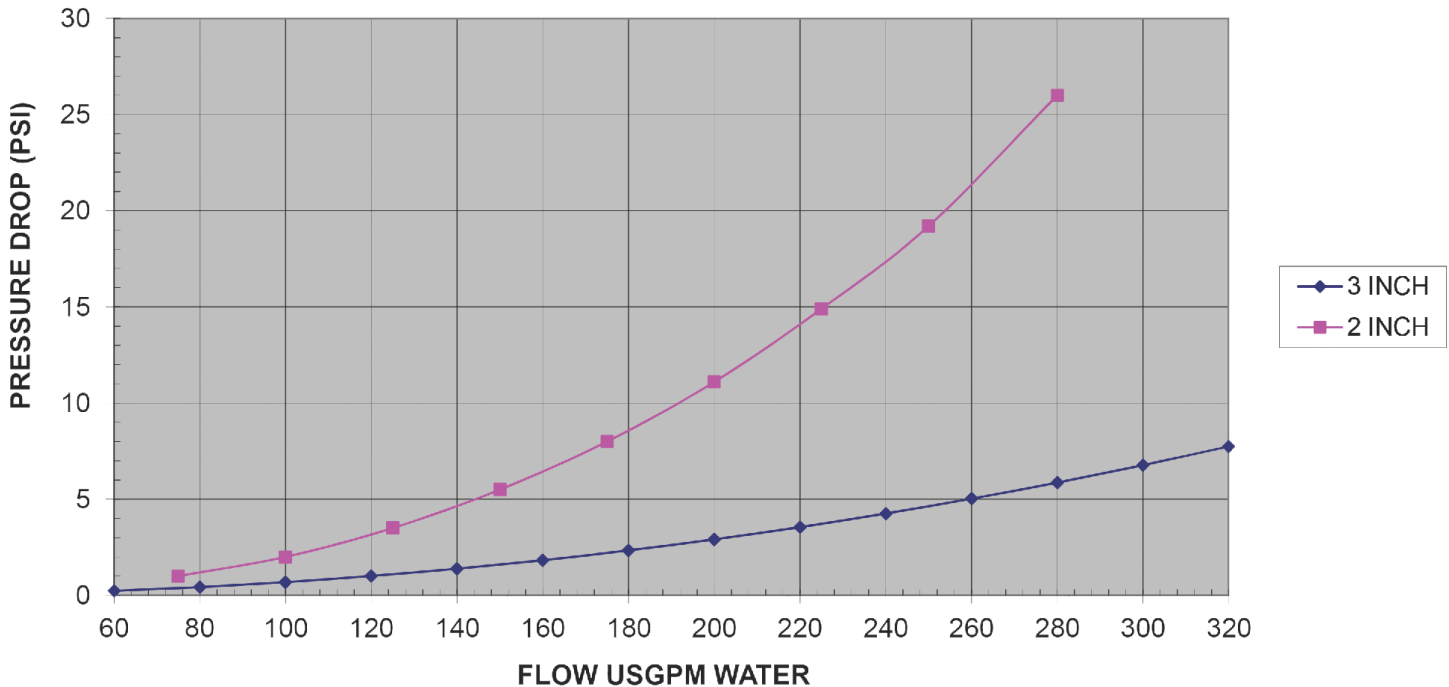
Female NPT Adapters

Part #	Description
BA31-200	Stainless steel body with brass poppet valve
BA32-200	Stainless steel body with brass poppet valve
BA31-300	Brass body and poppet valve
BA32-300	Brass body and poppet valve
BA61-300	Anodized aluminum body and poppet valve
BA62-300	Anodized aluminum body and poppet valve

Female NPT Couplers

Part #	Description
BSS61-200	Aluminum body with straight swiveling NPT connection
BSS62-200	Aluminum body with straight swiveling NPT connection
BS61-200	Aluminum body with 90° swiveling NPT connection
BS62-200	Aluminum body with 90° swiveling NPT connection
BSS61-300	Aluminum body with straight swiveling NPT connection
BSS62-300	Aluminum body with straight swiveling NPT connection
BS61-300	Aluminum body with 90° swiveling NPT connection
BS62-300	Aluminum body with 90° swiveling NPT connection

Flow and Pressure Chart



Operating Instructions

These products are designed to operate as Dry Disconnect couplings. They are to be used in place of standard couplings when it is desired to prevent product from spilling from the fittings upon disconnect. This product is not intended to be the primary flow control or flow shut off device. Just as with standard non-dry disconnect fittings, it is intended that a flow control and flow shutoff valve will be installed in the system.

To use these fittings, attach the coupler to the mating adapter by aligning the three bayonet studs with the three corresponding notches in the adapter. Push the coupler onto the adapter and rotate clockwise about 20° clockwise until the coupler stops rotating.

To open the fittings, rotate the lever on the coupler approximately 190° counterclockwise until it moves into an over center position and remains in place. At this time, the flow control valve can be opened to transfer product.

After the product has been transferred, close the flow control valve, then rotate the coupler lever clockwise until it returns to its over center closed position and remains in place. Rotate the coupler about 20° counterclockwise until the coupler stops rotating. Separate the coupler from the adapter.

Cautions:

Care must be taken in the design of the piping system to avoid trapping liquid between a shut off valve and a Dry Disconnect Coupler or Adapter. If liquid is trapped in this manner and the temperature increases, the pressure in the closed volume will rise dramatically and the Dry Disconnect fitting will be damaged.

connect with us on



Dixon Bayco

800 High Street • Chestertown, MD 21620

ph: 800.355.1991 • fx: 410.778.4702

dixonvalve.com

scan to visit our website

